

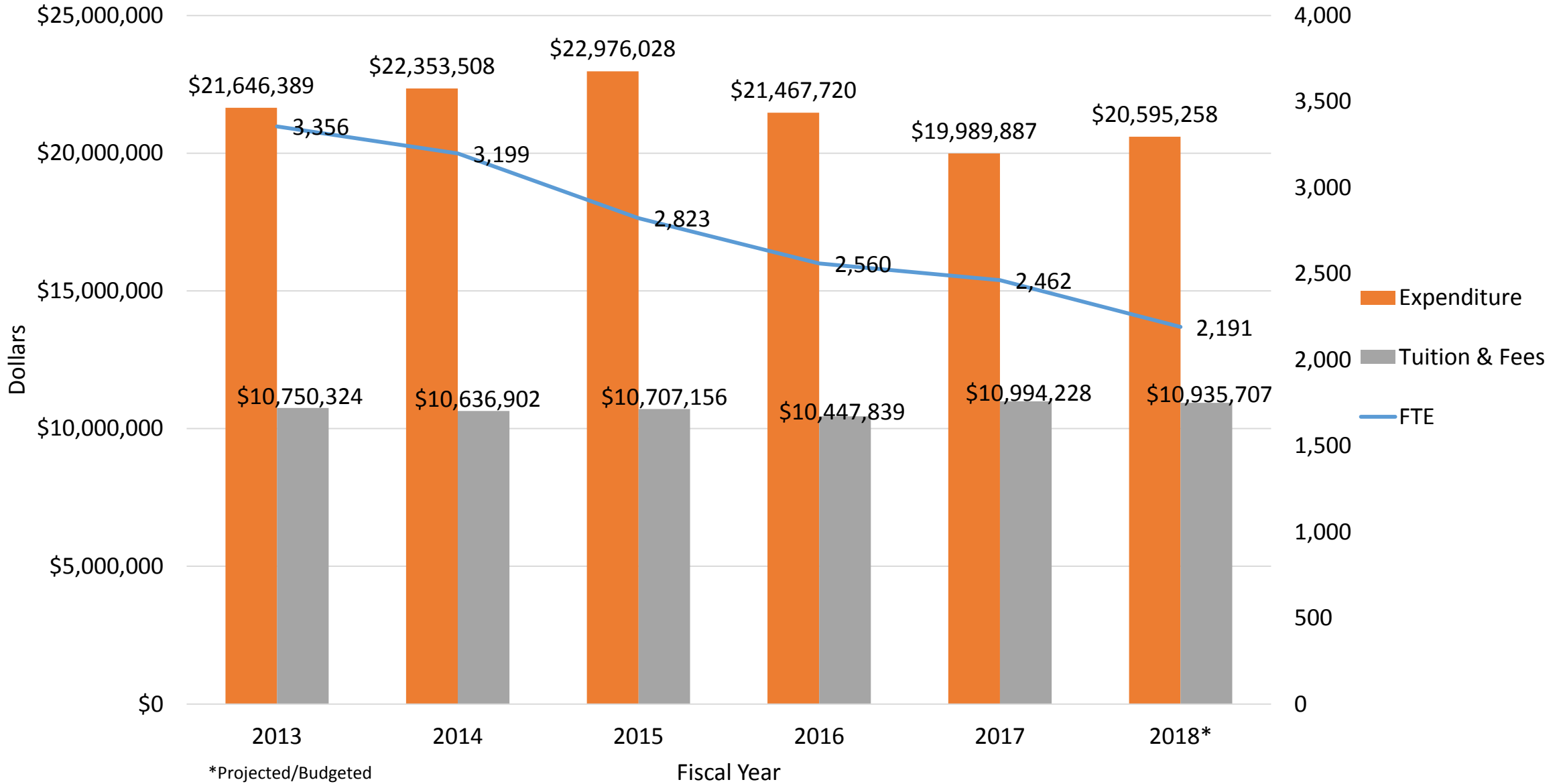


Enrollment Analysis

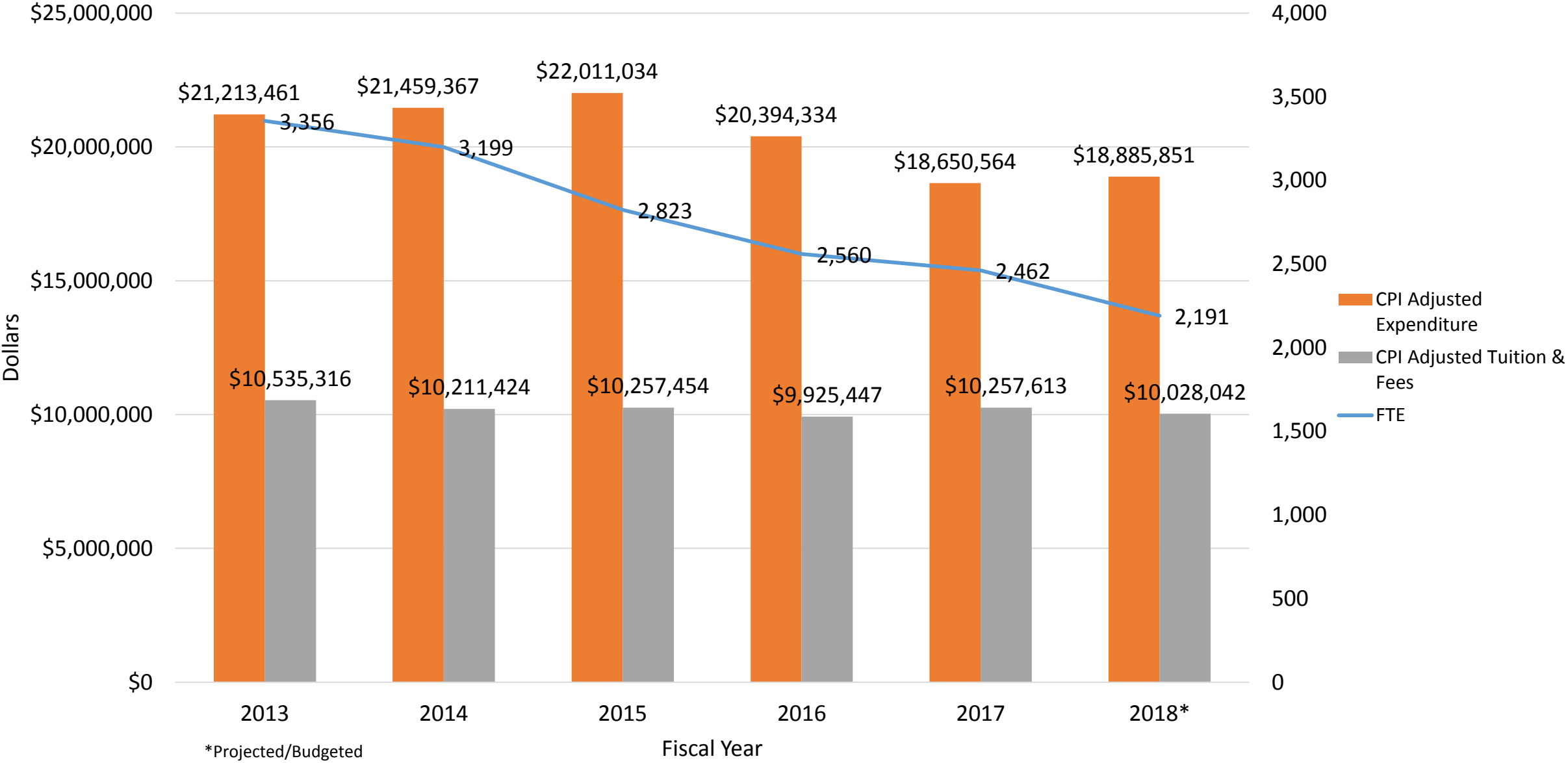
Kishwaukee College Board of Trustees Meeting:

September 12, 2017

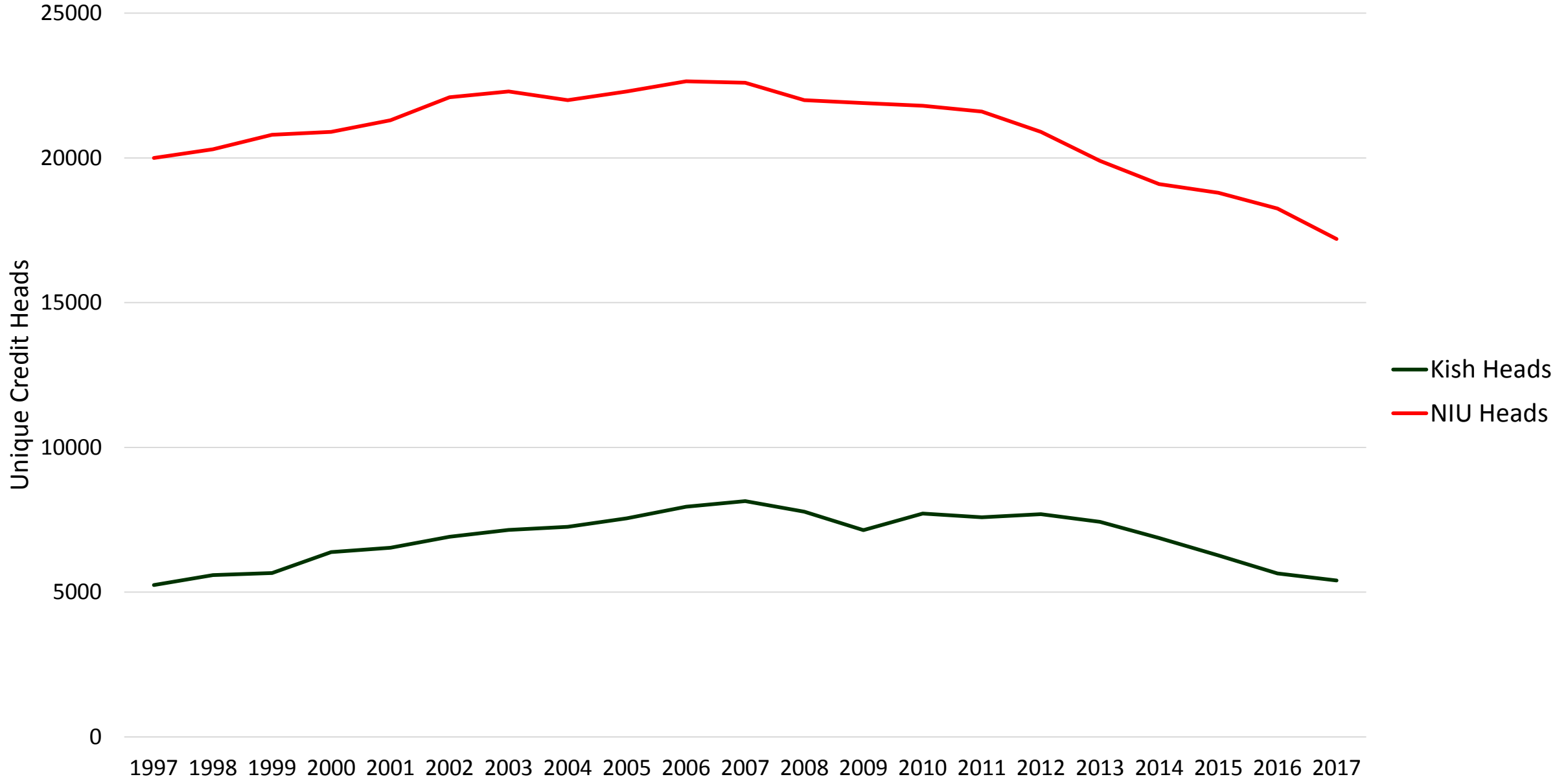
Expenditures vs Tuition/Fees Collected vs FTE



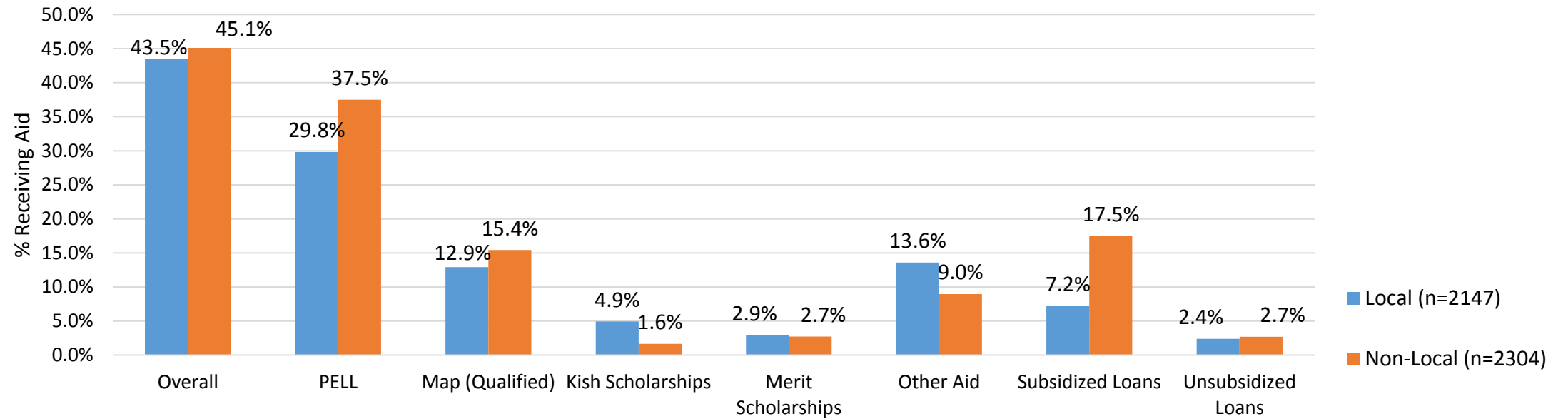
Expenditures vs Tuition/Fees Collected vs FTE: CPI Adjusted



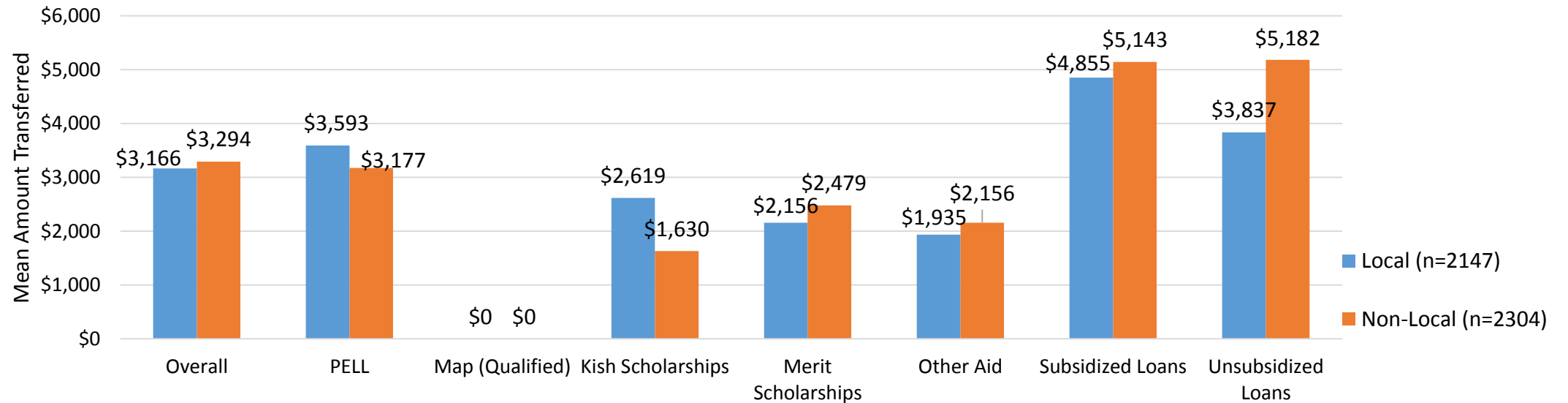
Unique Credit Headcount by Year: NIU versus Kishwaukee College



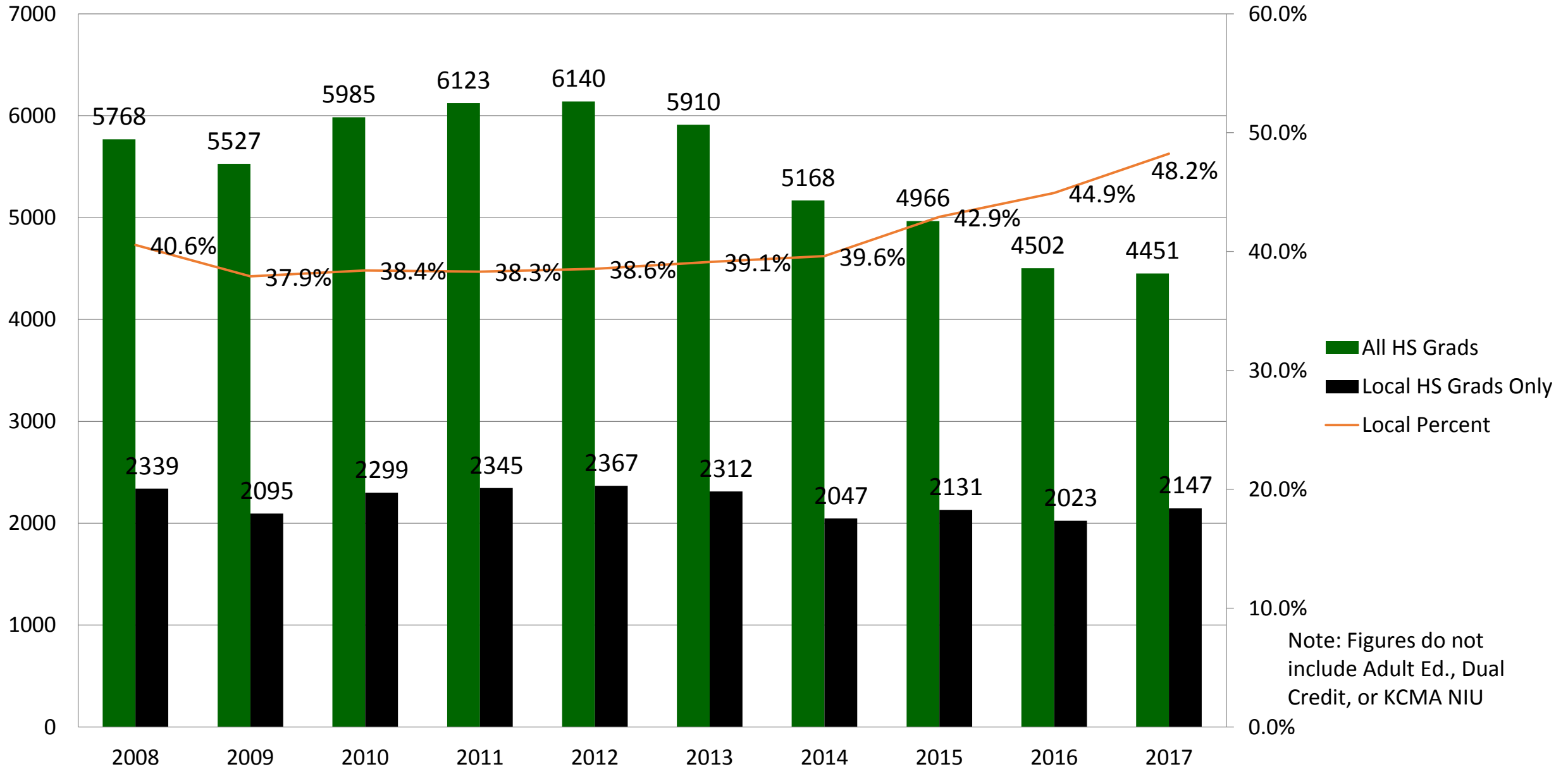
FY17 % of Students Receiving Aid by High School Type



FY17 Mean Aid Transferred by High School Type



Local v. All High School Grads Enrollment at Kishwaukee College



Note: Figures do not include Adult Ed., Dual Credit, or KCMA NIU

Fall to Fall Persistence: Local HS Grads vs. Others

